



S P A M O N T A G E

LAGUNA BEACH

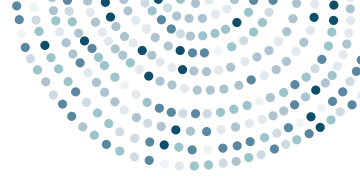


# SPA MONTAGE

*Laguna Beach*

Welcome to Spa Montage Laguna Beach, where our mission is to support you in achieving your wellness goals through an exceptional palette of spa therapies – all inspired by our seaside surroundings. Every service is highly personalized and our caring staff of highly educated professionals stand ready to exceed expectations.

Throughout our 20,000 square foot spa, enjoy luxurious amenities including a eucalyptus steam room, dry redwood sauna, ocean air whirlpool, refreshing cold plunge, fireplace lounge, ocean view fitness center, movement studio and saltwater lap pool featuring stunning views of the Pacific. From advanced skin care to holistic wellness therapies, comprehensive fitness offerings and world class salon services, Spa Montage Laguna Beach offers an exquisite and unforgettable spa experience.



# ELEMENTS OF WELLNESS

Our experienced Montage Therapists undergo hundreds of hours of specialized education and training in order to create truly customized therapies that best address your needs. Through careful consideration and well-crafted global experiences, we have designed our Elements of Wellness rituals to inspire rejuvenation, transformation and stillness of mind specifically for you.

## PURE BLISS

90 / 120 minutes • \$375 / \$500

We are delighted to warmly welcome you into a world of couture, beauty and wellness wonders, where we are dedicated to using powerful yet gentle natural ingredients that usher you into a state of bespoke luxury and deep relaxation. Designed specifically for Spa Montage, this total body ritual uses Lola's Apothecary's products which are lovingly handmade on a Devonshire estate in the heart of the English countryside. Beginning with a full-body exfoliation of aromatic salts that reveal soft and supple skin, the treatment is completed with the pouring of a hydrating body milk and a deeply nurturing massage, tailored by your therapist to meet your needs. Choose from the following scent stories to make your time with us even more special.

*Monsoon Paradise* – An exotic brightening feast of citrus, amyris & lilyang heart in our sophisticated jasmine escape containing real 24ct gold.

*Sweet Lullaby* – Our unique comforting blend of euphoric vanilla & sweet orange, grounded by patchouli & spicy ylang ylang fragrantly cocooned around an exotic lavender comfort blanket to soothe the busy minds.

*Delicate Romance* – A sumptuous blend of sweet orange & lemon notes balance the opulence & indulgence of heady rose & geranium. An enchanting indulgence of romantic blooms & spices fleeting passing notes of vanilla, patchouli & sandalwood serenity.

## CALIFORNIA WILDFLOWER RITUAL

90 / 120 minutes • \$375 / \$500

Created exclusively for Spa Montage and celebrating our Southern California roots this head-to-toe experience is a bouquet of vibrational technology, heated healing flower poultices and aromatic essences that are the inspiration for this restorative ritual. Beginning with full-body vibrational work, your therapist takes you on a journey that encourages your muscles to release and deep, profound relaxation to begin. After the soothing vibrational work, we then employ a customized massage highlighted with heated herbal poultices comprised of rice, calendula flower, lavender and chamomile. To further enhance your deep state of relaxation, we then wrap you in an Orange Blossom Soufflé and perform a relaxing foot scrub and massage. Your journey ends with gentle vibrations on your feet to reawaken you, refreshed and renewed.

## FUSION

90 / 120 minutes • \$375 / \$500

Elevate your wellness to a new level by experiencing the best that spa science and ancient healing wisdom can offer. In this customized body balancing experience, a Montage Therapist selects from a global spectrum of spa therapies and practices to create a unique and comprehensive wellness journey for you. Working together with your therapist, we will develop a treatment ritual to address your specific concerns and wellness goals, using the expert touch and training of our therapists to set you on a path of ultimate well-being and renewed vitality.





# FACIALS

## VALMONT FACIALS - SCIENCE. ART. SPA.

A true anti-aging expert, for more than 30 years Valmont has been perpetuating the expertise of Swiss cellular cosmetics. True to the concept of cellulotherapy, Valmont delves into the very nucleus of the skin's cells to find molecules with peerless anti-aging properties: Triple DNA and RNA.

Every 90 minute and 120 minute Valmont beauty treatment features a signature collagen infused mask, composed of pure medical grade collagen. Designed to strengthen and stimulate cells suffering from the effects of time or outside aggressions, the collagen infusion reveals sublime and youthfully radiant skin post treatment. If you require extractions, please consult with your esthetician.

### THE MASTERPIECE

*90 / 120 minutes • \$850 / \$1050*

Experience the ultimate in anti-aging perfection and cellular renewal. This exclusive treatment, designed specifically for Spa Montage, combines the power of a dual cleansing process with six masks including a complete collagen treatment for the face, neck, décolleté and the eyes. Furthermore, this elevated ritual uses the infusing power of oxygen, suction and a combination of salicylic and glycolic acid peels to remove impurities deep within your skin to fight the acceleration of aging. You will have glowing, clarified and lifted skin.

### THE MAJESTIC - ELIXIRS DES GLACIERS

*90 minutes • \$550*

A unique, luxurious alliance of rare and noble ingredients derived from Switzerland combined with the highest concentration of anti-aging DNA. An exclusive technique inspired by surgical lifting, targets the muscles of the face for toning action that smooths facial lines and restores elasticity. This luxurious treatment concludes with an application of Valmont's native cellular collagen mask, visibly enhancing with an immediate lifting effect.

*Further enhance with signature collagen for the eyes.*

### COLLAGEN ENHANCEMENTS *Optional Additions to Valmont Treatments*

Our medical-grade collagen can enhance any Valmont Beauty Treatment. Please allow our Spa Concierge to help guide your choice.

**DÉCOLLETÉ • 30 minutes • \$200** – Skin of the upper chest instantly recovers its natural resilience, suppleness and radiance.

**FACE AND NECK • 30 minutes • \$150** – A “biological face-lift.” Thanks to a combination of active ingredients, this mask helps reactivate the skin's deficient natural functions.

**EYES • 30 minutes • \$75** – Instantly relieves and refreshes the eye contour area. This mask contains drainage-enhancing agents to reduce the appearance of under-eye puffiness and dark circles, helping restore more radiant looking eyes.





# FACIALS – NATURAL LUXURY

## LAGUNA BEACH FACIAL

60 / 90 minutes • \$250 / \$350

Inspired by the environment of Laguna Beach, this facial showcases the healing benefits of marine extracts, seaside botanicals and the masterful delivery of the true art of skincare. The skin is cleansed, purified and expertly prepared for layers of powerful concentrates, skin brightening serums and a custom-blended algae mask, applied with a decadent double-brush technique. A blissful neck and arm massage are woven throughout your experience until you are left with a nourished, beautifully balanced and vibrant complexion.

## ADVANCED SKIN CARE TECHNOLOGY

### HYDRAFACIAL®

60 / 90 minutes • \$300 / \$450

This refining treatment thoroughly cleanses, removes dead skin via Hydra-dermabrasion and a gentle peel, and extracts impurities while infusing intensive antioxidants and hydration for glowing skin with no discomfort or downtime. The 90-minute option includes LED light therapy.

To boost the effects, consider the following enhancements:

**DERMABUILDER** • \$50 – Minimizes signs of aging and recharges skin with a patented combination of peptides improving elasticity and tone.

**BRITENOL** • \$50 – Minimizes the appearance of dark spots and sun spots for an even complexion.

### SAPPHIRE OXYLIGHT® FACIAL

60 / 90 minutes • \$450 / \$600

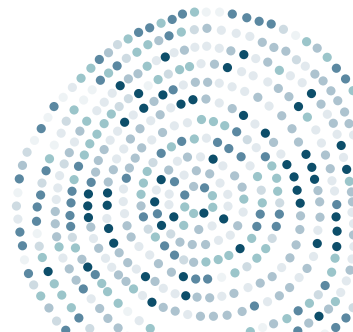
The OxyLight® experience combines only clinically-proven, science-backed treatments into one amazing session. Your master esthetician will guide you through a selection of modalities including diamond dermabrasion, pure oxygen, Biosonix ultrasound, Myolight micro-current, negative pressure and LED light therapy. *Recommended once a month for sustained results.*

### CRYO T-SHOCK

*Additional enhancement to any 90 minute facial treatment* • \$125

Designed to reduce the signs of aging, Cryo T-Shock reactivates dormant collagen, stimulates elastin and minimizes pores, creating tighter, healthier skin utilizing prolonged periods of cold followed by heat. Treatment includes décolletage.

*Recommended in a series for optimal results.*



# MASSAGE

Whether suffering from travel fatigue, work-induced stress, specific aches and pains or seeking new ways to unwind, our massage therapists will draw upon their extensive bodywork repertoire to provide relaxation and relief with their artful work in massage therapy.

## LAGUNA BEACH MASSAGE

60 / 90 / 120 minutes • \$250 / \$375 / \$500

Your massage therapist will guide you through an intuitive aromatherapy selection to artfully enhance your experience of pure relaxation or targeted therapeutic relief.

## LAGUNA GLOW STONE MASSAGE

60 / 90 / 120 minutes • \$250 / \$375 / \$500

Warm, hand-carved Himalayan salt stones relieve stress and bring you back into balance.

90 minutes or more may include a gemstone face massage or alternating cool stones if preferred.

## REFLEXOLOGY

30 / 60 / 90 minutes • \$150 / \$250 / \$375

The perfect alternative, or addition to, a full body massage.

30 minutes – feet only, the perfect addition to a bath, massage or facial.

60 minutes – full session, incorporating hands, head and feet as well as a replenishing foot treatment.

90 minutes – a perfect pairing of our full session with 30 minutes of massage.

## PRENATAL MASSAGE

60 / 90 minutes • \$250 / \$375

Specifically designed to support your body through the muscular and structural changes during pregnancy.

*\*\*\*Manual Lymphatic Drainage and Oncology Services Available by Request*



# BODY TREATMENTS



## SEASIDE RENEWAL

90 / 120 minutes • \$375 / \$500

California citrus is incorporated into this nourishing salt exfoliation. Soak in a bath of the highest quality ocean minerals. A light wrap of raw coconut and algae extracts replenish the skin. Finish with a luxurious full body hydration of emerald sea extracts.

## REFINING BODY POLISH

60 minutes • \$250

Decadent body polish fortified with Himalayan crystal salt and raw sugar cane reveal your body radiance by buffing away dead skin cells, while deeply nourishing rosehip CO<sub>2</sub>, shea butter and coconut oil nourish and caress new skin.

## CYRO-T SHOCK

60 / 90 minutes • \$500 / \$650

The Cryo T-Shock body sculpting treatment reduces cellulite, eliminates localized fat, as well as tones and tightens the skin. This reshaping process can focus on the stomach, legs/thighs or arms, while it relaxes muscles, speeds up cellular activity and repairs and reduces pain and inflammation. *Recommended in a series for optimal results.*





# FINISHING TOUCHES

## HAIR REMOVAL - THE ART OF SUGARING

Sugaring is an advanced specialty service that lasts longer than traditional waxing and leaves skin smooth and healthy. Traditional waxing is available and may be used based on request or specialist recommendation.

Face • Underarms • Arms • Chest • Legs • Back

## SPA MONTAGE MANICURE AND PEDICURE

*Manicure 60 minutes • \$100 / Pedicure 75 minutes • \$120*

## CLASSIC MANICURE AND PEDICURE

*Manicure 45 minutes • \$80 / Pedicure 60 minutes • \$100*

## GENTLEMAN'S MANICURE AND PEDICURE

*Manicure 45 minutes • \$75 / Pedicure 60 minutes • \$95*

## NAIL SERVICE ENHANCEMENTS

French Polish • Gel Polish Removal • Paraffin • Polish Change



# SALON SERVICES

## PRECISION CUTS

All Cuts • \$125 – \$200

Prices Vary by Length

## COLOR PROCESSES

Single Process Color • \$125

Partial Highlights • \$200+

Full Highlights • \$300+

Gloss or Toner • \$75

## STYLING

Shampoo and Blow Dry • \$85+

Modern or Classic Up Do • \$200+

## SPECIAL HAIR TREATMENT

Conditioning Treatment • \$80

## MAKEUP

Makeup Application • \$250+

Lashes and application • \$25

## EXTENSIONS

Tape-in or individual extensions

*Priced upon consultation*



# PERFECT FOR COUPLES

## COUPLES MASSAGE ESCAPE

60 / 90 / 120 minutes • \$500 / \$700 / \$900

(price per couple)

Created for just the two of you, this tailored massage allows you to enjoy quality time together during a side by side massage.

## ROMANTIC COUPLES JOURNEY

90 / 120 minutes • \$750 / \$950 (price per couple)

Following a luxurious exfoliation, submerge together in a botanical bubble bath while enjoying an aromatic scalp massage. Discover the true meaning of bliss with a hypnotic full body massage side by side.

---

# JUST FOR TEENS

Available for guests ages 12-15. Access to the Spa facilities and pool is not available. A parent must be present for the duration of all services, including in the treatment room for massage and facial services.

## TEEN BALANCING FACIAL

60 minutes • \$250

A specialized facial to balance the skin for a healthy, clear complexion.

## OCEAN WAVE TEEN MASSAGE

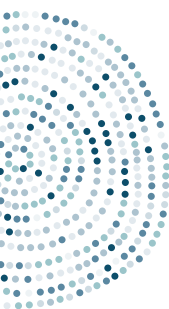
60 minutes • \$250

This Swedish-style massage relieves tension and soothes tired muscles.

## MISS MONTAGE MANICURE AND PEDICURE

Manicure 45 minutes • \$80 / Pedicure 60 minutes • \$100

Includes a soak, scrub and hydrating cremé.



# FITNESS

Our fitness trainers specialize in a variety of techniques and are here to assist you with looking and feeling your best. Choose from a variety of offerings such as personal training, yoga, spin, SurfSET®, Pilates, beach boot camp, guided hikes and more.

Group, private sessions and body composition analysis are available.





# PEACE OF MIND COMMITMENT

## DURING YOUR VISIT

- Your service provider and supporting spa associates will wear a face covering before, during and after your treatments.
- Please arrive at least 15 minutes prior to the start of your appointment; we encourage all guests to shower prior to the start of the treatments.
- During check in, guests will be asked to complete an updated health questionnaire prior to entering the spa.
- Please bring a face covering to wear during your visit to the spa. For your convenience, if you are unable to bring your own, one will be provided for you to wear while you are in the spa and all public spa areas. Face coverings are required during all services (excluding facials).
- Your temperature and the temperature of our spa associates will be checked by contactless thermometer upon arrival. For the health and safety of other guests and our associates, any guest with a temperature above 100.4°F upon arrival will need to reschedule their appointment for a later date. Any service which requires rescheduling upon arrival will not be charged to the guest.
- Hand sanitizer will be readily available for you to use during your time in the spa.
- Currently, we will refrain from the use of steam rooms, saunas and plunge pools.
- Please do not hesitate to contact the spa with questions about our health and safety protocols.

## SPA ETIQUETTE

- Social distancing protocols will apply and be enforced in all public spa areas.
- Each treatment has been scheduled to allow additional time between guests so that the treatment spaces can be deeply cleaned.
- For guests who feel unwell, last minute cancellation fees will be waived.



# VISITING THE SPA

## SPA ENVIRONMENT

Spa Montage is a place of tranquility, therefore we graciously request that you refrain from cell phone use, including taking photos or videos, within any indoor spaces. Alternately, quiet cell phone use (no talking) outdoors at the Spa Pool is respectfully requested.

## SPA ACCESS BY CHILDREN

Spa guests must be 16 years of age or older to enjoy the spa facilities, spa pool and fitness center. An adult, parent or guardian must be present in the room for any guests under the age of 16 who wish to receive spa services. Salon services are available for all ages.

## NO SMOKING

We ensure a healthy environment for our guests by upholding a non-smoking policy.

## ARRIVAL

For enhanced comfort and relaxation, we suggest that you arrive at least 30 minutes prior to your scheduled treatment. This will allow time to check in, receive a spa tour and enjoy the facilities prior to your service.

## LATE ARRIVAL

Arriving late will simply limit the time for your treatment. Your treatment will end at the scheduled time, so that the next guest will not be delayed.

## PAYMENT AND CANCELLATIONS

*Payment* – We accept all major credit cards or you may charge spa services to your resort bill. For your convenience, a 20% service charge is automatically added to all spa services. Payment is also accepted prior to your treatment.

*Cancellation Policy* – All reserved services must be guaranteed with a valid credit card or room confirmation number. Spa services are reserved especially for you, so we ask that you give us 24-hours advance notice should you need to reschedule or cancel your service. No-shows, changes or cancellations made less than 24-hours before the start time will incur a fee of the full price minus the 20% service charge.

## HEALTH CONSIDERATIONS

Please notify our Spa Concierge when reserving your treatments if you have high blood pressure, a heart condition, recent surgeries, allergies or if you are pregnant. Also, please advise us of any medication you are taking. If you have any concerns, please let us know. It is always advisable to check with your doctor prior to your arrival.

For additional information or to check availability please contact us at (949) 715-6010.



S P A M O N T A G E  
L A G U N A B E A C H

30801 SOUTH COAST HIGHWAY, LAGUNA BEACH, CA 92651

SPA DIRECT (949) 715-6010

RESORT (949) 715-6000

SPAMONTAGE.COM